

AC/DC Einbaunetzgeräte für freien Aufbau

Series PCM/TPCM AC/DC-Power Supply up to 800 Watt with PFC



Includes Isolated 5V, ¼ A Standby Output
Hot-Swap or Chassis Mount Versions
12, 24 or 48 VDC Outputs
Integral LED Status Indicators
I2C Serial Data Bus Option
Up to 10 Watts/Cubic Inch Power Density
Power Factor Corrected
Low Profile: 1.6 Inches High
Single Hot-Swappable Connector
Staged Pin Lengths
ORing Diode on Output*
1U, 19" Rack Mount Holds 2 or 3 Units*
Active Current Sharing
Universal 85 to 264VAC Input
Class B EMI Input Filter
Optimized Thermal Management
No Minimum Load
Control & Monitoring Features
UL, CSA, EN



PCM Series
(Chassis Mount)

TPCM Series
(Hot-Swap)

1U HIGH
(41 x 127 x 254 mm)

Typical at Nominal 115/230VAC Line, Full Load and 25° C Unless Otherwise Noted.

OUTPUT SPECIFICATIONS

Total Output Power, Continuous, Max	600-800 Watts
Voltage Adjustment Range, Min.	±5%
Total Regulation ¹ ,	2.0%
Total Regulation, Standby Supply	5.0%
Ripple & Noise, Pk-Pk ²	1% or 50mV
Holdup Time	20mS
Dynamic Response ³	300µS
Temperature Coefficient	±0.02%/°C
Minimum Load	0A
Overload Protection	Auto Recovery
Overvoltage Protection	Latched Shutdown
Remote Sense	Up to 0.25V Per Wire
Current Share	±10% Full Load Rating
Standby Output	+5V, 250mA
DC Power Good Signal	Logic Low
AC Power Fail Signal	Logic High
Global Inhibit	Logic Low
Enable	Logic Low
Thermal Warning	Logic High

INPUT SPECIFICATIONS

Input Voltage Range	85-264VAC
Power Factor	0.99
Input Frequency	47-63Hz
Inrush Current Limiting	30A Peak
Input EMI Filter ⁶	EN55022 Curve B FCC20780 pt. 15J Curve B

Harmonic Distortion	EN61000-3-2
Input Immunity, Conducted	
Fast Transients, Line-Line	±2kV (EN61000-4-4 Level 3)
Surges, Line-Line	±2kV (EN61000-4-5 Level 3)
Surges, Line-Ground	±4kV (EN61000-4-5 Level 4)
Input Protection	Internal Fuse, 20A

GENERAL SPECIFICATIONS

Efficiency ⁴	75-85% at Full Load
Switching Frequency,	
PFC Converter	48-110kHz
Output Converter	275kHz Nominal
Isolation, Class I, min. ⁵	
Input-Output	3000VAC
Input-Ground	1500VAC
Output-Ground	50VDC
MTBF (Bellcore)	200,000 Hours
Safety Standards	EN60950, UL1950, CSA22.2 No.950

ENVIRONMENTAL SPECIFICATIONS

Operating Temperature	0° C to 70° C Ambient
Derating	2.5% / °C, 50° C to 70° C
Storage Temperature	-40° C to + 85° C
Cooling	Integral Ball Bearing Fans

PHYSICAL SPECIFICATIONS

Case Material	Aluminum
Dimensions, Inches(mm)	1.6 H x 5.0 W x 10.0 D (40.6 x 127 x 254)
Weight	2.9 lbs. (1.3 kg.)

NOTES:

1. No load to full load, including line regulation and load regulation.
2. Whichever is greater. 20MHz bandwidth. Measure with 0.1µF ceramic and 10µF tantalum capacitors in parallel across the output.
3. <4% deviation recovering to within 1% for 25% load change.
4. Typical efficiency is at low end of range for 12V output and at high end of range for 48V output.
5. Input-output isolation figure is for isolation components only. 100% production Hipot tested.
6. When installed in compatible rack. Consult factory.

* TPCM Models

Standard models

MAX. OUTPUT POWER	OUTPUT VOLTAGE	OUTPUT CURRENT	INPUT VOLTAGE	PFC	MODEL NUMBER
650W	12VDC	54.2A	85-264VAC*	YES	TPCM3000
700W	24VDC	29.2A	85-264VAC*	YES	TPCM5000
800W	48VDC	16.7A	85-264VAC	YES	TPCM7000
480W	12VDC	40.0A	85-264VAC	YES	TPCM3000E
525W	24VDC	21.9A	85-264VAC	YES	TPCM5000E
600W	48VDC	12.5A	85-264VAC	YES	TPCM7000E

* Models also with 40-60 VDC Input Voltage available. (Series TPCM_Q) please contact factory
 For model series TPCP, 1u high, up to 1200 Watt please contact factory

NOTE: The table does not show the independent 5V, ¼A standby output which is standard on all models.

Options

CODE	OPTION	OUTPUT DERATING
R	"Reverse Air Flow (Back to Front) on Standard Models"	20%
R	"Reverse Air Flow on "E" Suffix Models"	16.6%
Z	I ² C Serial Data Bus	N/A
E	IEC Input with AC Power Good LED and DC Power Good LED	N/A

NOTE: Add Option Code as suffix to model no.
 Contact factory on availability of Option Z.

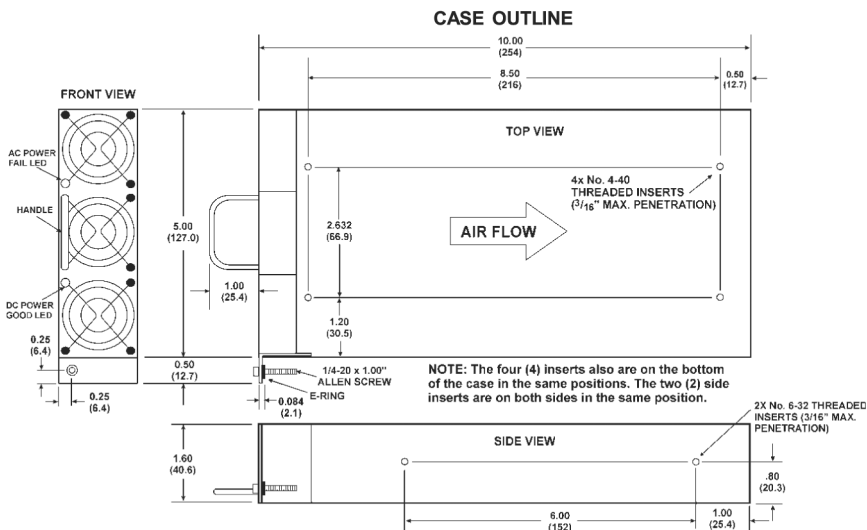
MATING CONNECTOR KIT
Order Kit Number 775-1449-0000

MATING INTERFACE BOARD
Order Kit Number 009-3736-0000

PIN CONNECTIONS			
PIN	Function	PIN	Function
1	+V Out*	13	Module Present
2	+V Out*	14	DC Power Good/ADD GA1*
3	+V Out*	15	AC Power Fail
4	V Return*	16	V Trim
5	V Return*	17	Overtemp. Warning/ADD GA0*
6	V Return*	18	Current Share
7	Enable*	19	Current Monitor/ADD GA2*
8	+ Sense	20	+5V Standby
9	- Sense	21	Standby Return
10	Inhibit	22	Chassis Ground
11	Spare/SDA*	23	AC Line
12	Spare/SCLK*	24	AC Neutral

*NOTES: For unit to operate, pin 7 must be at logic LO or shorted to pin 9.
 For proper operation the following pins must be connected together:
 All V Out pins (1-3); all V Return pins (4-6). Pins 11, 12, 14, 17 & 19 function as I²C outputs when that option is present.

CASE OUTLINE



ALL DIMENSIONS IN INCHES (mm).
 All specifications subject to change without notice.
 NOTE: The TPCM Model is shown. The PCM version does not have handle or mounting bracket with bolt.