

Inverter

ZBTPU69000 Series

External Static Switch for ZDTAC60000 Inverters

Features:

- Small size, light weight, standard 19" rack
- On-line/off-line configurations, user changeable during operation
- Fast switching, user programmable reaction time for optimized system performance
- Large user programmable synchronization range
- Continuous microprocessor based internal monitoring and diagnostics
- Remote monitoring through RS-232 with standard PC

User programmable parameters:

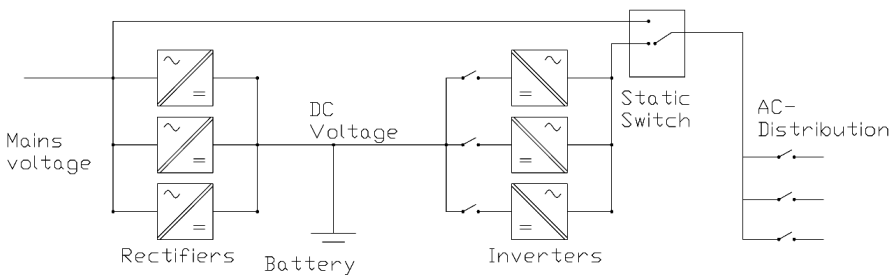
- On-line/Off-line configuration
- Minimum and maximum inverter RMS voltage conformity
- Minimum and maximum mains RMS voltage conformity
- Minimum and maximum mains frequency conformity
- Maximum allowed mains frequency change rate
- Load level to return to inverter supply after overload
- Delay to switch to inverters at rapid mains blackout or over voltage (min. 1ms)
- Delay to switch to mains at rapid inverter blackout or over voltage (min. 1ms)



Horizontal installation to 19" 2U panel
AC-distribution and manual bypass can be included to same package



Vertical installation
6U/14TE module



STATIC SWITCH (BYPASS) MODELS							
Type	Nominal Voltage	Frequency Range	Max Current	Nominal Power	Cooling	Dimensions Without Handles	Weight
ZBTPU69130VF	230VAC	40-70Hz	27A	6000VA	Convection	14TE x 6U x 372mm	3kg
ZMTSR7990+BPU69130VF	230VAC	40-70Hz	27A	6000VA	Convection	19" x 2U x 372mm	4kg
ZBTPU69010VF	115VAC	40-70Hz	27A	6000VA	Convection	14TE x 6U x 372mm	3kg
ZMTSR7990+BPU69010VF	115VAC	40-70Hz	27A	6000VA	Convection	19" x 2U x 372mm	4kg

Z8T760039A	Power cable between static switch and inverter
Z8T760038C	Parallel connecting cable, 2-6pcs of inverters or static switch and 1-5pcs of inverters
	Mains input cable 2m and AC output cable 2m are included in static switch packing

Geräte für Labor und Prüfstand

Specification

Electrical:

Operation voltage range
Synchronizing frequency range
Protection
Efficiency at full load

80 - 270 VAC
40-70 Hz (user programmable)
external fuse in mains AC input
> 99 % @ 230VAC

Mechanical:

Connectors

Enclosure
Environmental temperature
45...60°C reduced power

Inverters up to 5 pcs
AC input
AC Output

ST18
AMP Mate-N-Lock
AMP Mate-N-Lock
Steel casing IP20
0...45°C full power

Standards:

Safety
EMC

EN 60950-1
EN 55022B, EN50082-2

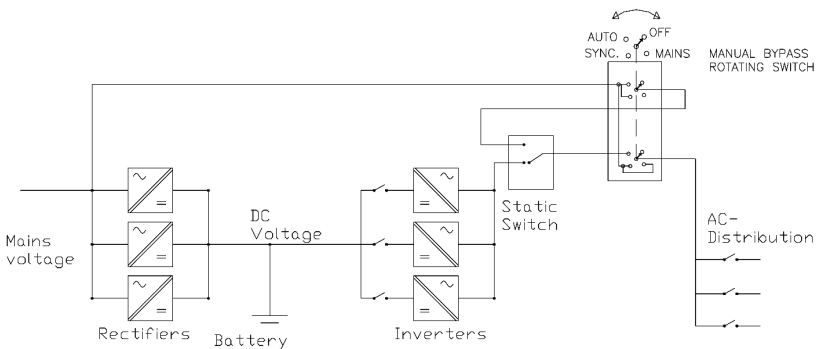
Alarms and Indicators:

LED indications

Relay alarms
Primary
Remote monitoring through RS-232

Overload – Fault - Mains failure - Mains in use
Inverter failure - Inverter in use – Synchronized - Communication
Fault in system
supply failure

Manual bypass and AC-Distribution Solutions



Standard modules

ZMTBP68000 and ZMTBP68200 units offers ready made AC-distribution and manual bypass solutions to build full inverter systems just by choosing needed modules.

Customised solutions

Customised distribution solutions are also available based on project needs.



Complete Inverter System 19" 6U

ZMTBP68000 fits ideally to be used with ZDTAC60000 vertical 19" 6U model inverters. Complete inverter system including 1...4pcs of inverters (600...4800VA), 6kVA static switch, manual bypass and AC-distribution can be installed to one 19" 6U sub-rack.



Horizontal Inverters System

ZMTBP68200 fits ideally to be used with ZDTAC60000 horizontal 19" 2U model inverters. Depending on the needed power in the system 1...5pcs of 600...1200VA inverters can be installed in parallel including external static switch, manual bypass and AC-distribution. ZMTBP68200 and inverters are installed on top of each other in 19" cabinet.



ZITEC320 Distribution solutions

19" 1U distribution panels with ZITEC320 connectors offers safe and easily changeable distribution solution. Ampere meter also available for local load monitoring.